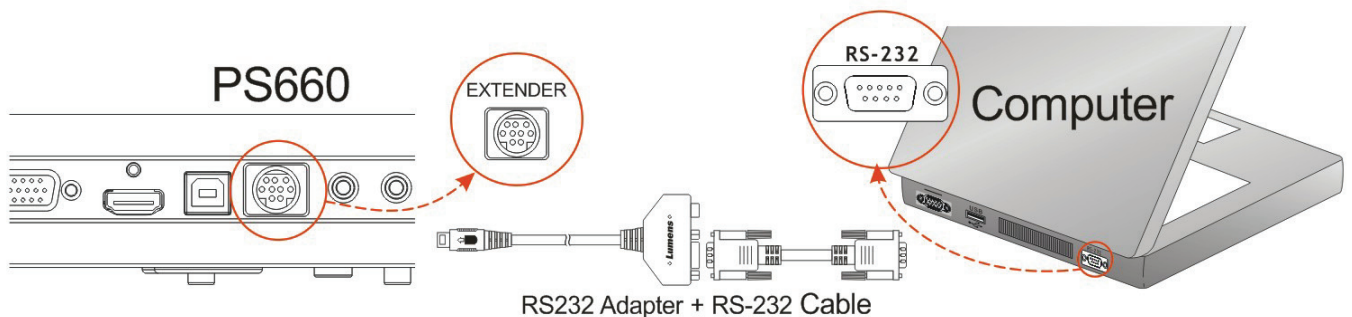


# Quick Start Guide for Projector Control via a Visual Presenter

Date:2009/04/09

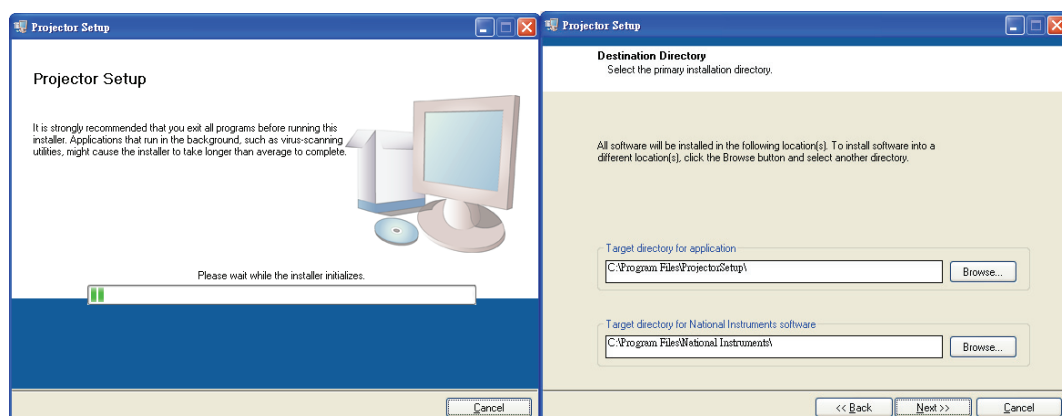
## Step 1 Connect the computer

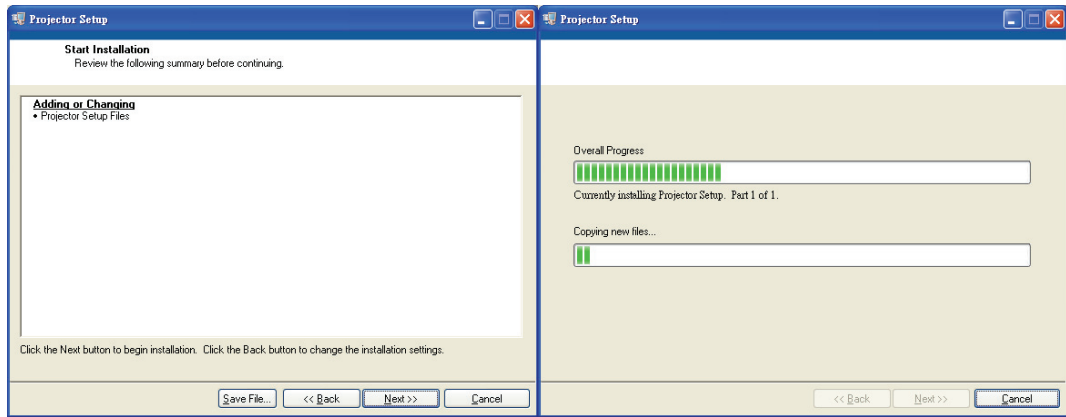
Connect the RS232 adapter to the EXTENDER port of the visual presenter (such as Lumens PS660) and then connect the RS-232 cable between the RS232 adapter and the RS-232 port of the computer.



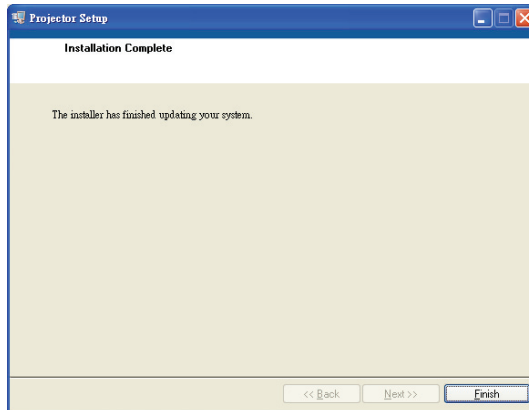
## Step 2 Install the Application Program

- 2.1 Locate the setup file on the enclosed SD card.
- 2.2 Click **[Software]** / **[Projector Setup]** / **[Setup.exe]** on the SD card
- 2.3 Click the **[Setup.exe]** to install the program.
- 2.4 Follow the screen instructions and press **[Next]**.





2.5 Once installation is complete, press **[Finish]**.



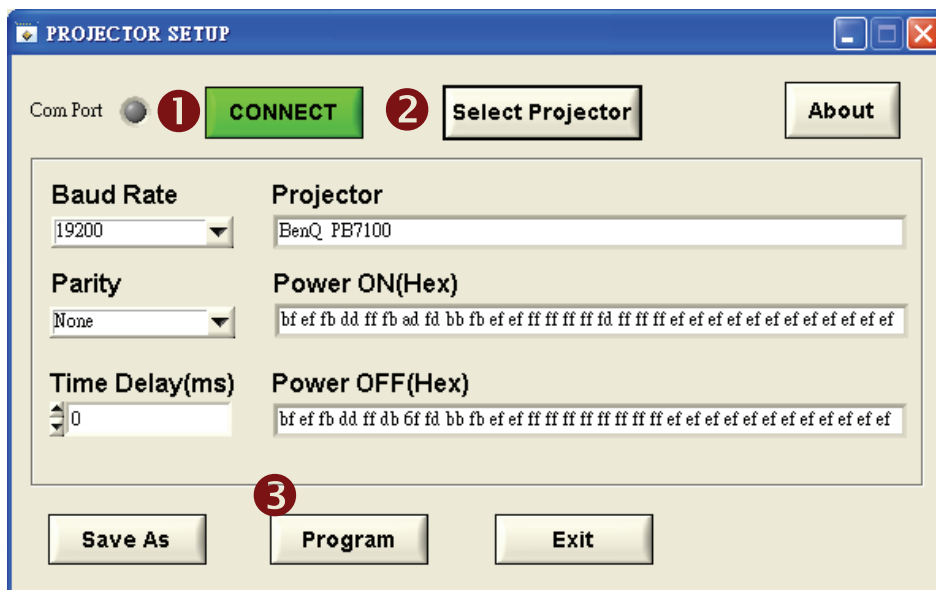
## Step 3 Setup the program

3.1 Click **[Start]** / **[Programs]** / **[Projector Setup]**



3.2 After the application has launched, the setup window below will appear.

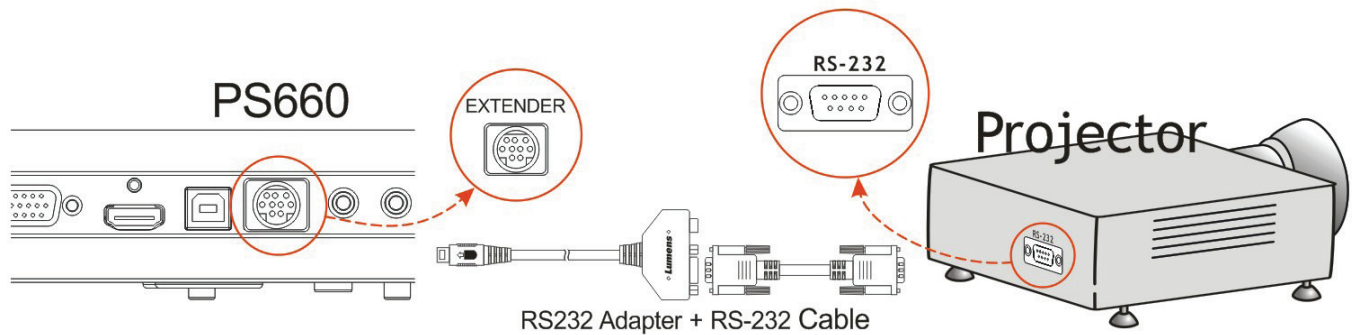
3.3 Press **[CONNECT]** to create a connection. The **[Com Port]** “indicator light” will turn green to signal a successful connection.



- 3.4 Press **[Select Projector]** to select the desired projector and display its information.
- 3.5 Press **[Program]** to switch the setting to Visual Presenter (PS660).  
<NOTE> If you have modified any setting, press **[Save as]** to create a “\*.txt” file of the changes.
- 3.6 Once settings are completed, press **[Exit ]** to exit the program.

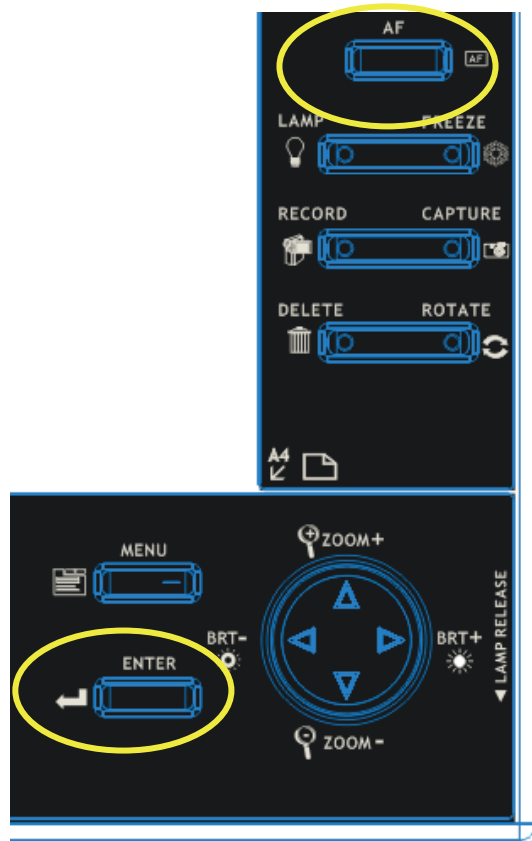
## Step 4 Connect the projector

- 4.1 Remove the RS-232 cable from the computer.
- 4.2 Connect the RS-232 cable to the RS-232 port of the projector



## Step 5 Control the projector

5.1 Press [AF+Enter] on the PS660 control panel to turn on the projector.



5.2 Press [AF+Menu] on the control panel of PS600 to power down the projector.

